

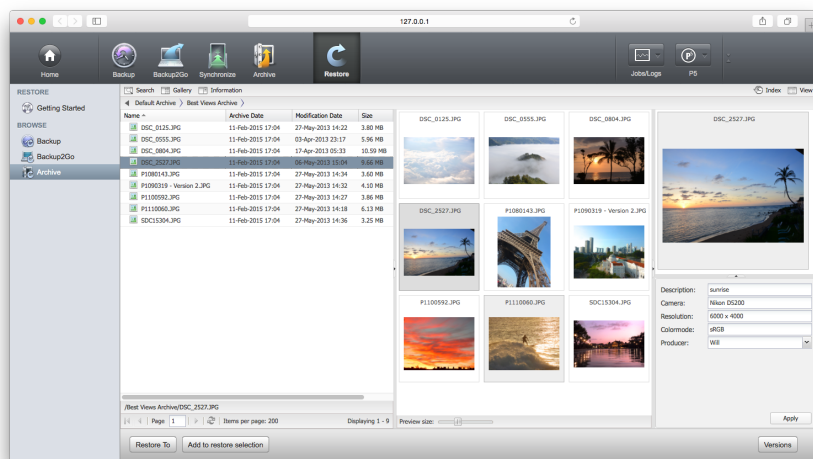
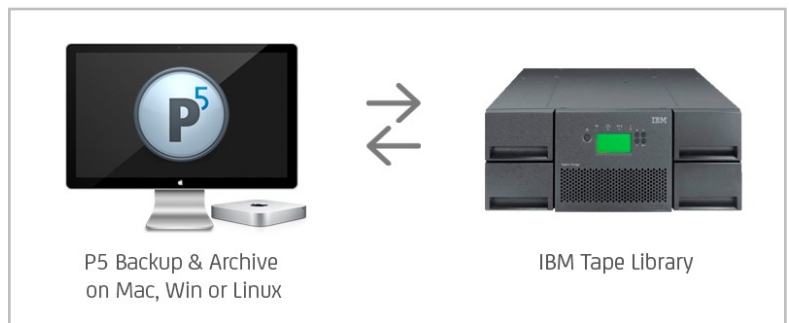
Protect your data and media assets on LTO Tape

Archiware P5 Backup, P5 Archive & IBM Tape Libraries

Media assets are the backbone of any production or broadcast company – therefore, their protection should have top priority. A mixture of mid-term and long-term protection is the perfect recipe to keep them safe at all times. LTO tape is the ideal storage medium to complement this strategy – easy to use, inexpensive with a certified 30 year shelf life.

The Archiware P5 Software Suite offers modules for both mid-term and long-term data security: **P5 Backup** for data duplication and quick recovery in case of user errors or hardware failure, and **P5 Archive** for data migration to keep important data safe for years.

P5 Backup creates full or incremental copies of your data and stores them on disk or tape for a defined retention period. If needed, data can be restored by any user through the P5 browser interface.



When your business and the requirement for storage space grows, your P5 licenses can be expanded to fit additional drives and extensions.

Archiware P5 Archive and P5 Backup are compatible with all IBM tape libraries and run on Mac, Windows and Linux, even in mixed environments.

P5 Archive migrates data which is no longer in daily use onto LTO tape. All archived data can be browsed in a catalogue (including metadata and previews) and restored from the tape archive with one click if required.

For additional security, a tape cloning feature creates duplicate tape sets to allow offsite storage. In multi-drive libraries, faster archiving speed can be achieved by parallelizing the writing process.

Use your **IBM tape library** with both P5 Backup and P5 Archive simultaneously – simply split the tapes into dedicated pools for Backup and Archive.

P5 Archive Advantages:

- ✓ Browse Media with Previews/Proxies
- ✓ Search Metadata in configurable catalogue
- ✓ One Solution for all Platforms (Mac, Win, Linux)
- ✓ User Restore
- ✓ Long-term storage, certified for 30 years
- ✓ Parallelization for speed and scalability
- ✓ Tape cloning for maximum security, off-site storage
- ✓ Combine with P5 Backup for daily server backup

Options, Configurations, Interfaces...

We are happy to advise: www.ibm.com
www.archiware.com

sales@archiware.com

