

DDP Changes Everything

DDP V3 is a free upgrade for all existing and new DDP users, and is highly recommended – anyone interested in shared storage should take a closer look...



Dynamic Drive Pool (DDP) is an Award Winning Ethernet-based SAN shared storage, which offers unparalleled performance, is easy to use, and with a redefined Workflow Manager, is not just a shared storage solution, but a real solution for even the most complex video and audio workflows.

IBC2014, the home ground of Ardis Technologies (the makers of DDP), saw the new release of DDP OS V3, boasting many advanced features unseen anywhere else.

Web GUI

DDP has gained a revamped, web-based GUI for ease of use. New to the GUI are functions such as, Folder Volumes with Quotas, AVFS2NAS, Archiware P5 backup, Nagios integration, UPS manager, direct link to Raid Card, and many others.

Built-in notifications appear on the left panel for events, such as drive failure, volume check, and progress of backups. Uniquely, DDP has a built-in algorithm that can analyse and recognise the type of video stream, allowing the operator to see how many streams of each video type are currently running.

Workflow Manager

With the release of the new Workflow Manager, DDP features another innovation.

From within the DDP software you can create lists of users and groups of users. However, permissions can be assigned on a desktop level too. From here you can then assign users and groups to folder hierarchies within drives. The folder permissions assignable are read/write, drop box, read only, and read/write

with no delete. Crucially, Workflow Manager functions equally well in a heterogeneous Windows, Mac, and Linux environment.

The Workflow Manager was developed for audio and video, with the non-IT user in mind. There is no need for a complex Open Directory or Active Directory server and the technical overheads that go with it.

However, DDP V3 fully supports LDAP and AD/OD services. With this new functionality, it will enable enhanced workflow additions for applications like, Pro Tools, Final Cut Pro, FCPX, Media Composer, Premiere, Prunus, Edius, Fairlight, Vegas, Softron, and many others.

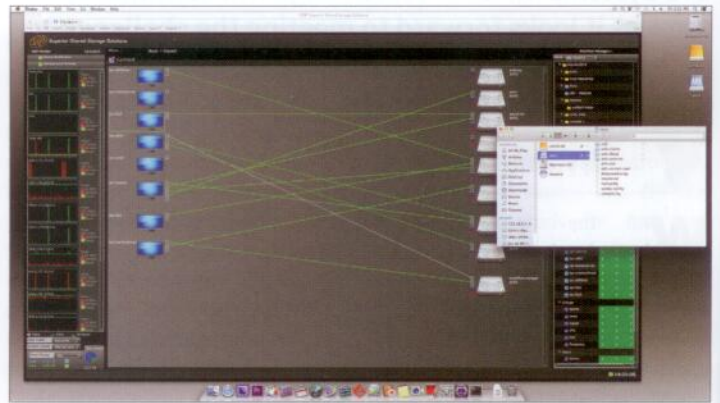
Managing the workflow is important for every organisation, and with Workflow Manager it's very easy.

When someone says "SAN", the first thing that comes to mind is speed. DDP is even faster than Fibre Channel systems. It can use MCS (Multiple Connections per Session), its own technology to pair multiple 1 GbE or 10 GbE Ethernet lines.

Also, as AVFS drivers are installed, DDP controls desktops with Bandwidth Manager to provide QoS - Quality of Service. However, in large organisations, not everyone needs fast access, and sometimes administrators like to use NAS storage, without installing any software to client machines.

Now with DDP's own AVFS2NAS module, you can use DDP volumes as NAS, with no need for any software installation.

What's more, you can create users, assign permissions, and utilise Workflow Manager for folder access rights. So DDP can work equally well as SAN and/or NAS.



DDP can report on video stream type usage

Folder Volumes

This clever engineering deserves special attention. In a shared storage environment there are usually multiple volumes, which are connected to different workstations (variously called drives, LUNS, media spaces, workspaces).

This is because not everyone should have access to all the media files at the same volume. The disadvantage of this method is that if you want to give the same media to another user, you will need to move files/media between the volumes, and this means you will start copying the data, which takes up extra space, extra time, and reduces the overall storage bandwidth. Also, when working with MAM, or backup solutions, such as Archiware P5, it is much more difficult to manage these processes across multiple volumes.

Folder Volumes resolve this issue. Folder Volumes are folders/directories within the same DDP Volume and when connected to a PC, Mac or Linux workstation, they are seen at a root level.

This means you can have one DDP Volume (one Namespace) and any number of roots.

The advantages of this are; no more copying, no extra bandwidth usage, and the administrator for MAM or backup applications needs to manage only one DDP Volume. All Folder Volumes are part of the same DDP Volume, and therefore users have all capacity of the DDP. Capacity per user can be managed by Quotas,

so for example, if one user is close to exceeding his quota of, say 2 TB, even during the ingest, the administrator of the DDP can extend that quota on the fly.

Archiware Backup

Every DDP comes with Archiware P5 pre-installed, and the license for P5 Backup is included with the DDP hardware. Every installation gains immediate professional grade backup to LTO tape. Tapes can easily be stored off-site for the highest security requirement and disaster recovery.

Included P5 Backup license allows backup to LTO tapes, using a single tape drive, but the license may be extended for use with tape libraries, synchronisation, or archive modules.

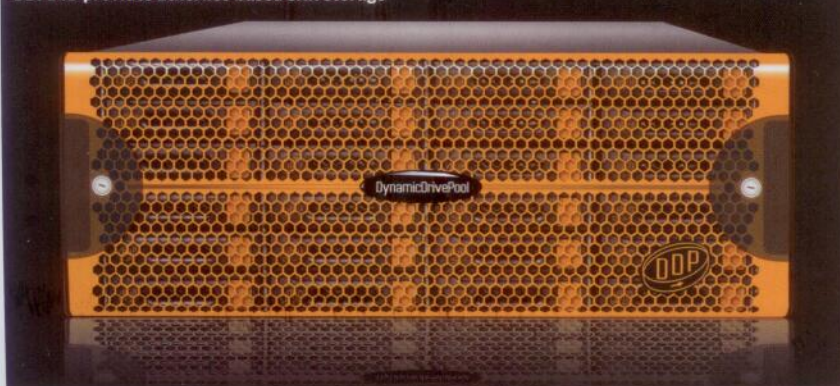
An unlimited number of tapes can be written and P5 Backup keeps track of all tapes and files written. The P5 Backup catalogue can be searched and browsed, using a web browser.

Data can be transferred between the DDP and LTO with a speed of up to 160 MB/s. Additionally, P5 Archive for migrating media offline can be activated simply by extending the license, with no further installation necessary.

P5 Synchronize is also available as an extension for cloning DDP volumes for data availability.

For more information about DDP - The Award Winning shared storage, please visit www.ddp-asia.com

DDP24D provides Ethernet-based SAN storage



iabm
DESIGN & INNOVATION
AWARDS - 2014
WINNER