

Archiware Introduces LTFS Support and Extends Cloud Backup

Archiware, a leading manufacturer of data management software, recently released the latest version of its P5 Software Suite.

Key features in P5 version 5.6 include LTFS support, support for Microsoft Azure, Hitachi S3, Wasabi S3 and Backblaze B2 cloud services and new functionalities for P5 Synchronize.

This latest release brings a variety of new features over the three main modules of the P5 software suite. P5 Archive and P5 Backup, already capable of securing data and media to various cloud services, now also support Microsoft Azure, Hitachi S3, Wasabi S3 and Backblaze B2. To facilitate the transfer of large amounts of data to the cloud independent of the internet connection, P5 Archive now allows using import services such as Backblaze Fireball and Amazon Snowball.

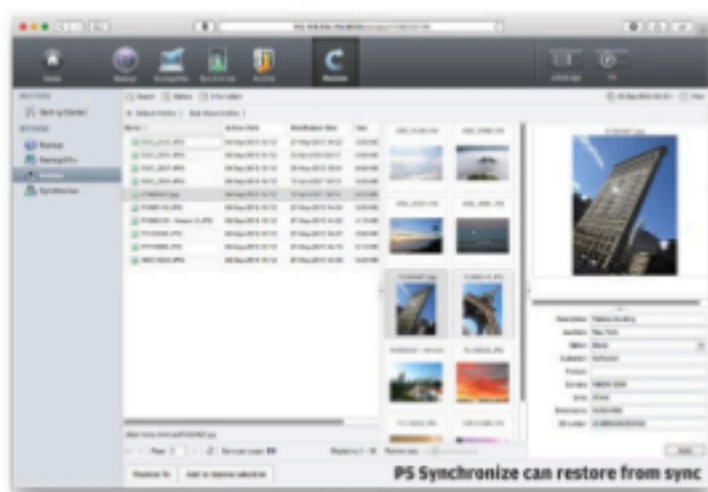
The main addition to P5 Archive is the native LTFS integration, requiring no additional drivers or software. Assets from the Archive or the local

file system can be imported from and exported to LTFS formatted tapes which are well suited for transporting and exchanging data, e.g. raw material or finished projects.

P5 Synchronize, Archiware's high-end cloning tool, has received four new features:

- Throughput Tuning with parallel file transfer for even faster synch jobs;
- More flexibility due to a new deletion mode;
- Restore from Sync for quick retrieval of data from the Sync target to external storage;
- Manual Sync for one-time cloning without the need to set up a Sync Plan.

With the release of version 5.6, Archiware is also offering the new "P5 Desktop Edition", an essential license package including P5 Archive



and P5 Backup to a single LTO tape drive, intended to make P5's high-end data security and broad feature set affordable for single users and small groups.

The new features are available to existing clients within their running Software Maintenance Agreement. A free 30-day trial is available, and further information about the

new features can be found on the Archiware website. ■



LTFS
Integration